

MARITEK PTY LTD

A B N 79 363 216 832

MARINE SURVEYORS & ENGINEERS



12 ALICUDI AVENUE, FRANKSTON SOUTH, 3199.
MELBOURNE, AUSTRALIA

Tel: (03) 9787 6318 Fax: (03) 9775 2144
(International + 61 3 9787 6318)

Email: maritek@hotmail.net.au Mobile: 0407 331 544



13 October 2011

Ref: DSR 021/011

REPORT OF CONDITION SURVEY & VALUATION

Vessel MV MARY ANN

THIS IS TO CERTIFY that I the undersigned Marine Surveyor acting on instruction from Mr P Taverna did on the above date attend the subject vessel on the slipway on the Murray River at Echuca Victoria, for the purpose of conducting an out of water condition survey and valuation for insurance and other purposes.

Particulars of Vessel.

SURVEY STATUS	:	Commercial Current NSW Maritime USL Class 1E
REGISTRATION /ID	:	15808 for day and night operation on Murray River
TYPE	:	Restaurant Cruise and Function Passenger Vessel
HULL MATERIAL	:	Steel High Tensile
CARRYING CAPACITY	:	135 day pax maximum
HULL BUILDER	:	Goolwa Ship Construction, South Australia
YEAR OF BUILD	:	1981
DIMENSIONS	:	Length 19.7m, Breadth 8.2m, Draught 1.1m
PROPULSION	:	Twin MWM diesels/ propeller shaft drive. Straight six cylinder four cycle Diesel Engine. Fresh water cooled Approx 65 Kw (88HP) @ 2400 Rpm

MARITEK SOLUTIONS



DESCRIPTION

Vessel has a green hull with buff topsides and burgundy decals.
Hull form is catamaran, slab sided hard chine slightly curved with plumb transom stern and swim ended plum stems, hull undersides is strong vee form forward tapering to almost flat aft.
From forward on the main deck is a glassed/ roofed semi open forecastle with hatch access to lower stores, guest initial entry is via an adjustable hinged gangway, the main deck has side decks with aft facing stairs to the upper deck.
Front and side sliding doors give access to the restaurant deck, fitted out with disco to starboard, a series of tables and chairs, port aft is the bar servery with galley directly aft. A centre alleyway leads to the aft service open deck with wing hatch access to both machinery spaces.
Opposite the galley is the ladies and gents toilets with hand basins and normal fittings.
The upper deck forward has a centre wheelhouse with hinged doors to open decks.
The upper deck provides casual seating and tables and viewing facilities with an aft open deck with awning.

WHEELHOUSE

Open style arranged with three half height raked windows.
The captain sits on a stool with steering from a helm controlling dual rudders with link.
The engine single lever engine controls are to port with gauge panels centre, and adjacent switch board and fire gas alarm panel opposite.
The generator panel is located centrally.
A filing cabinet and bench is located port aft.

CONSTRUCTION

Below the main deck the vessel each hull is subdivided into four separate water tight compartments: Fore peak, store forward, store tank space aft, engine room.
Hull is full fabricated welded in mild steel plate with stiffening between bulkheads and diaphragms achieved by flat bar mild steel plate.
The vessel is heavily built with some recent work being carried out in the starboard hull.
The interconnecting deck is flat with tapered transition to the hull, the main deck is further raised. Main deck restaurant is steel fabricated, upper decks are lightweight fabrication,
Both upper and lower decks have large alloy sliding framed windows.
Good safety rails are fitted all around.
Awnings are trim deck steel.
Scantlings per hull 4mm steel plate, 4 x Stringers 6mm @450 centres
Ring frames 8mm plate @ 700mm centres, 8mm longitudinal girders.
Propeller shaft cutlass bearings supported in a plate steel aft skegs with triple vee brackets. Cutlass bearings currently renewed. Hull scalloped in way of propellers.

3 of 7

MACHINERY

TWIN MAIN ENGINES

Port and starboard diesels located in separate engine rooms on aft wings.
Make MWM Model D 225 /6 S/N Port 600562, Starboard S/N 500560
Straight six cylinder naturally aspirated diesel engines.
Fresh water heat exchanger cooled. Solid mounted.
Wet type exhaust with steel pipe muffler transom exit..

Running hours recorded	Port	23441
	Starboard	22538

Controls single lever morse cable.

Each engine is configured with a belt driven alternator and belt driven fire and self priming bilge pump.

Seawater intakes are single standpipe with fitted valves, all currently opened for survey inspection.

Instrument for each engine at helm station.

Tachometer, hour meter, cooling water temperature, Lube oil pressure and voltmeter, with full alarms.

Engines are 12 VDC remote electric start, solenoid stop.

Dedicated starting batteries for each engine with isolator/ selector.

GEARBOX'S

Close coupled to engines

Make NEWAGE Model unknown

Reversing reduction hydraulic type

with oil coolers. Reduction ratio est. 3 : 1

Shaft seals packing type approx 42 mm diameter s/ steel both currently being renewed.

POLYFLEX couplings. Four blade solid bronze propellers (not sighted)

GENSET AUXILIARY ENGINE No 1 Port side

Make PERKINS Model 4236

Type, four cylinder diesel engine

Genset running hours 16, 493

Instruments , Tachometer, temp , oil pressure volts and alarms.

Fresh water heat exchanger cooled

Wet exhaust transom , dedicated starting battery.

Generator 240 V AC 3 phase 32 Kva Make unknown

Switch board on main deck with meters

Supplies air conditioning 2 x units Make BRAEMAR.

All flood lights.

GPO's throughout the vessel.

Alarms and security.

Refrigeration.

Cooking appliances.

Engine room supply air fans.

4 of 7

GENSET AUXILIARY ENGINE No 2 Starboard side

Make MWM Model DITer D- 202-2
Type, two cylinder diesel engine .
Some instruments cw temp, oil pressure,
Fresh water heat exchanger cooled
Running hours 6931
Wet exhaust transom exit, dedicated starring battery
Switch board on main deck
Generator 240 VAC 3 Phase 13.5 Kva Make STAMFORD
Port engine room fitted with an air compressor Make Mc Milan

Shore power

2 three phase connections with appropriate protection.

STEERING GEAR Make HYDRIVE.

Type Hydraulic, fitted with helm pump. Rudder angle indicator.
Link arm between rudders.
Single hydraulic ram.
Rudders Plate steel semi balanced currently being renewed including pintle.
Lower pintle supported by keel horn, emergency steering by engines.

BILGE PUMPS

2 x Main engine driven PEGSON self priming fire and bilge with bilge suction manifold from all compartments.

TANKS

	Type	T.Capacity	Location	Number
FUEL	Steel freestanding	800 litres.	Amidships	P & S 2
FRESH WATER	on aft upper deck	900 litres	Aft	2
BLACK WATER	alloy new freestanding	6000 litres	Starboard	1

ANCHORING and DECK EQUIPMENT

Anchor and rode chain ample .
Anchor. Type DANFORTH
Mooring bitts up forward and aft.
Alloy tender with outboard motor.
Aft manual davit winch.
Many mooring lines.

Navigation equipment

Clock and barometer.

Plotter with flat screen PC Make VIEWSONIC

2 x Sounder (Hummingbird and Garmin)

Radio Make GME Model TX 4720

Radio Make UNIDEN Model UH 013

Wind Make NAVMAN

SAFETY EQUIPMENT to NSW Maritime

Navigation lights.

Many horns.

Search and flood lights.

56 x PFD's

4 x Liferafts: Carley float type.

4 x Lifebuoys.

2 x Large main bilge pumps

Fire Fighting Equipment.

Fire pump petrol with deck reel and hose.

Fire pump manual.

Portable Extinguishers:Type.Number and Location to NSW maritime requirements.

Fixed fire system flooding to engine rooms.

Smoke and fire alarms.

GASGUARD Fire / gas detection alarm system.

Mandatory survey equipment including flares

Hand held spotlight.

AIRPHONE intercom system

Stability Book sighted

Safety and Operational Procedures Sighted.

First Aid Kits

Gas compliance certificate.

Fire equipment testing.

Safety grab Bag.

Engine room insulation.

6 of 7

CATERING EQUIPMENT

Fresh water pressure pump	Make ONGA
PA system	Make MOTOROLA
Disco system	Makes SONY, ROLAND, JVC and Passport control panel.
Speakers	Makes FENDER and WECONIC
2 x Gas heaters	Make AIRA
Cash register.	Make SHARP
TV	Make 2 x AWA flat screen
Coffee maker	Make SAN MARINO
Drink mixer.	
Drinks refrigerators	Many
Food refrigerators	Many
Double sink drainer.	
Hot water service	Make BOSCH
Refrigerator	Front loading.
Dishwasher	Make SHARPLINE
Microwave oven x 2	Make NEC
Range oven	Make EMILIA
Rotary pizza	
Deep fryer	Make WHIRLPOOL
Refrigerated serving cabinets	
S/ steel bench space.	
Keg handling system	
Catering plate store	
Lower store refrigeration unit.	
Port engine room fitted with two sealed refrigeration units.	
Parquetry dance floor.	
Chairs and tables	Many
Aft upper deck awning with corner posts.	
Gas bottles hire type gang connection system on aft open deck.	
Main deck internal stairs to forward and aft, port and starboard stores.	

7 of 7.

GENERAL CONDITION SUMMARY

The presentation was found to be open and honest with all main compartments maintained in well ordered operating condition, the owner master and deck hand were in attendance.

The vessel appears well designed and constructed to a good commercial standard. This vessel exhibits indicators of regular maintenance and housekeeping.

Wheelhouse, galley/ servery area and all passenger spaces were found to be kept clean and in reasonable cosmetic condition.

General fabric maintenance on deck and below is indicative of some continual maintenance with an absence of superficial corrosion and maintenance of reasonable protective paint coatings.

All anodes being renewed and hull antifouled at current slipping.

Engine room cosmetic appearance was fair with decks free of oil, water or debris.

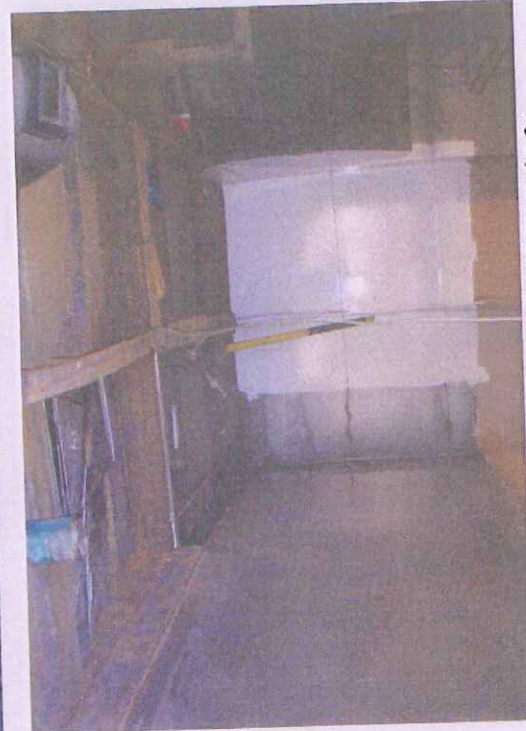
The engines have been professional serviced and maintained by AQUA POWER MARINE, good running maintenance was found.

In my professional opinion, this particular vessel general condition is well found and fit for its intended purpose, accordingly, being in current statutory survey it represents a fair and reasonable insurance risk.

HULL TUNNEL



REPAIRS BLACK WATER TANK RENEWAL



FORKS VIEW -



AFT VIEW

